

# Quick Start Guide LMS Account Creation

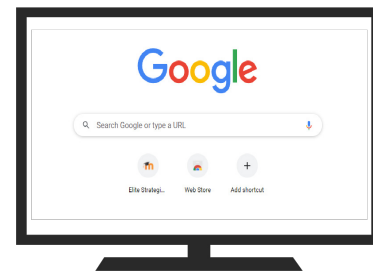


# Elite Strategic Training

## Open & Search



Open a new tab using any web browser.



Click on this [LINK](https://lms.elitestrategictraining.com/login/index.php) or copy and paste this address into your browser's address bar:

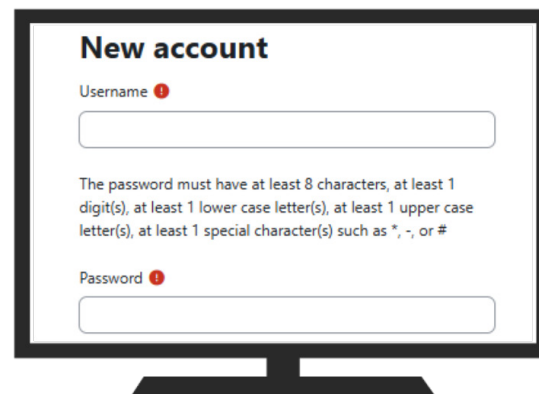
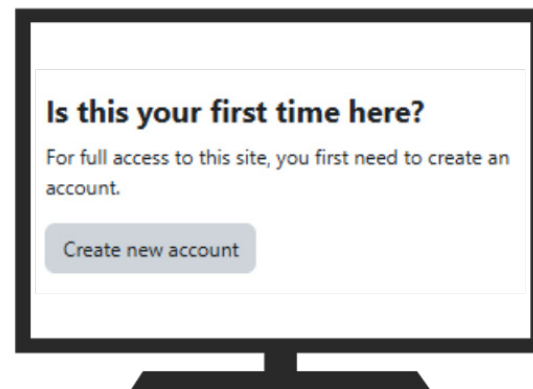
<https://lms.elitestrategictraining.com/login/index.php>

As of January 1st, 2025:  
Everyone, even previous LMS users,  
must create a NEW account.

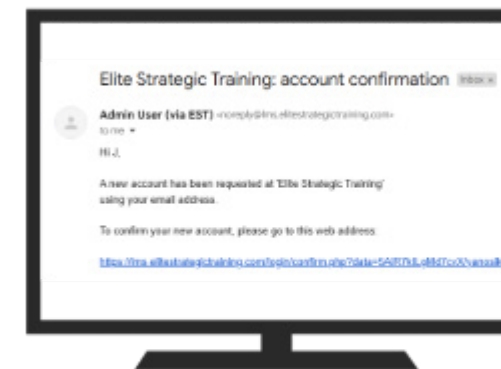
# LMS Account



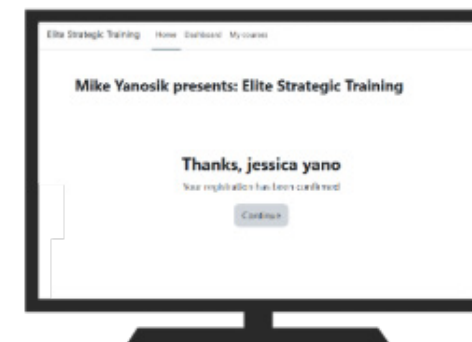
## "Create New Account" & Enter Credentials



## Confirm



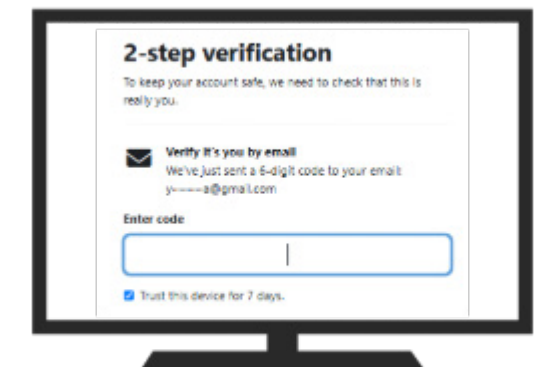
Confirm your account via the link sent to your email.



You are now logged into the LMS.

If you have any questions or need assistance, please email:  
[Mike@EliteStrategicTraining.com](mailto:Mike@EliteStrategicTraining.com)  
[Connor@EliteStrategicTraining.com](mailto:Connor@EliteStrategicTraining.com)

## Verify & Access



Enter the code sent to your email to verify your account.



[lms.elitestrategictraining.com](https://lms.elitestrategictraining.com)  
This is where you will access your course content.

This account will also be used to login to "EST Courses."  
Check out the "EST Courses" Quick Start Guide when installing the "EST Courses" application.